

Table 1: Namibia CPI: All-Items Index on base Dec.2001, monthly and annual percentage changes

	Index	Monthly percentage changes	Annual percentage changes
2005			
Apr-05	121.8	0.4	1.6
May-05	121.4	-0.3	0.9
Jun-05	121.6	0.2	1.3
Jul-05	122.6	0.8	1.7
Aug-05	123.5	0.7	2.2
Sep-05	124.2	0.6	2.9
Oct-05	124.5	0.3	2.9
Nov-05	124.8	0.2	3.4
Dec-05	125.0	0.1	3.4
An. Av	122.9	0.3	2.2
2006			
Jan-06	126.1	0.9	3.6
Feb-06	126.4	0.2	3.7
Mar-06	126.9	0.4	4.6
Apr-06	127.2	0.2	4.4
May-06	127.5	0.3	5.1
Jun-06	128.0	0.4	5.3
Jul-06	128.9	0.7	5.1
Aug-06	130.2	1.0	5.4
Sep-06	131.0	0.6	5.5
Oct-06	131.7	0.5	5.8
Nov-06	132.4	0.6	6.1
Dec-06	132.5	0.1	6.1
An. Av	129.1	0.5	5.1
2007			
Jan-07	133.7	0.8	6.0
Feb-07	134.0	0.2	6.0
Mar-07	134.9	0.7	6.3
Apr-07	135.9	0.8	6.9
May-07	136.6	0.5	7.1
Jun-07	137.0	0.3	7.0
Jul-07	138.2	0.9	7.2
Aug-07	139.1	0.6	6.8
Sep-07	139.8	0.5	6.7
Oct-07	140.4	0.4	6.6
Nov-07	141.5	0.8	6.9
Dec-07	141.9	0.3	7.1
An. Av	137.7	0.6	6.7
2008			
Jan-08	144.1	1.5	7.8
Feb-08	144.6	0.4	7.9
Mar-08	146.2	1.1	8.4
Apr-08	148.6	1.7	9.3

Chart 1: NCPI, Percentage changes from Dec. 2001

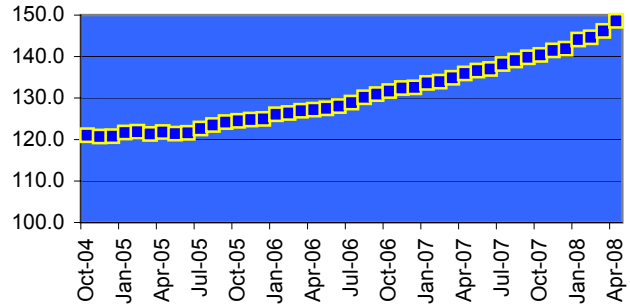


Chart 2: NCPI; Month-to-month percentage changes

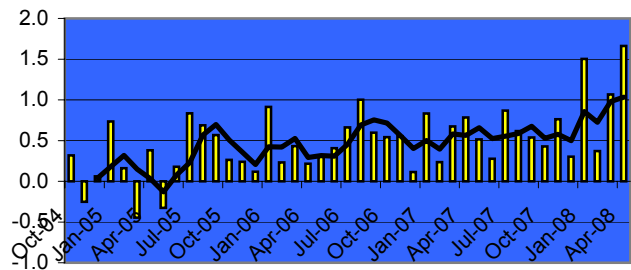


Chart 3: NCPI; Annual percentage changes

